

HOW IS GIS HELPFUL?

The McGIS online resources allow you to:

- Locate a place in McLean County using Address, Parcel ID Number (PIN), Streets, Subdivision, Zoning and more...
- View Plats with dimensions, lots, etc.
- Find Election information such as Precincts, Wards, Polling Places, McLean County Board Districts, State Representative & Legislative and Federal Congressional Districts.
- Links to:
 - [Crime Analysis](#) (*City of Bloomington*)
 - [Sites & Buildings](#) (*Economic Development Council*)
 - [Public Transit](#) (*Connect Transit*)
- Explore Zoning, Topography, Soils, Hydrology, Parks & Trails, etc.
- Find information about various boundaries including municipalities, townships, range and section boundaries, etc.
- Create a custom map with your markups.
- Compare recent and historic aerial photography of McLean County.
- Access information on taxation, assessments, recorded documents, Bing, Google Maps, Census and much, much more...

FREE WEB ACCESS

Desktop computing devices with a high speed internet connection supporting common web browsers and Microsoft Silverlight plug-in.

Mobile Works on most HTML5 supported devices such as Tablets and Smart Phones with mobile operating systems and browsers (see prerequisites).

The **McLean Regional GIS Consortium** (McGIS)

A cooperative resource management effort of the following:

County of McLean
mcleancountyil.gov

City of Bloomington
cityblm.org

Town of Normal
normal.org

City of Bloomington Township Assessor
wevaluebloomington.org

Emergency Telephone System Board
(911)

**McLean County Regional Planning
Commission**
mcplan.org

Coordination is provided by
**McLean County Regional Planning
Commission**

**115 E. Washington St., M103
Bloomington, IL 61701**

**Phone 309.828.4331
Fax 309.827.4773**

gis@mcplan.org

March 2015

McGIS.ORG
**PUBLIC GEOGRAPHIC
INFORMATION SYSTEM**



OUR MISSION...

“TO DEVELOP, MAINTAIN, DISTRIBUTE, AND PROMOTE GIS FOR THE OVERALL BENEFIT OF THE CITIZENS OF McLEAN COUNTY.”

ON-LINE MAPPING

1. Go to : McGIS.org
2. Read & Accept : **The License**
3. Click on : **On-Line Mapping**
4. Choose : **An App**
5. Refer to : **The Tutorial & Help**

PREREQUISITES

Desktop - On-Line Map Viewers use **pop-ups** and the **Microsoft Silverlight plug-in**.



Please enable both for proper functionality & consult your popup blocker, web browser and operating system documentation.

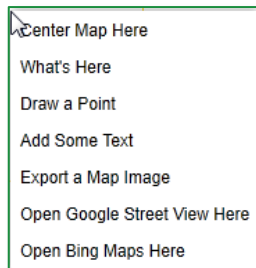
Mobile - Works on most HTML5 supported environments e.g.:

- Devices: Tablets, Smart Phones etc.
- Operating Systems: iOS, Android etc.
- Browsers: Chrome, Firefox for mobile etc.

MOUSE USAGE TIPS

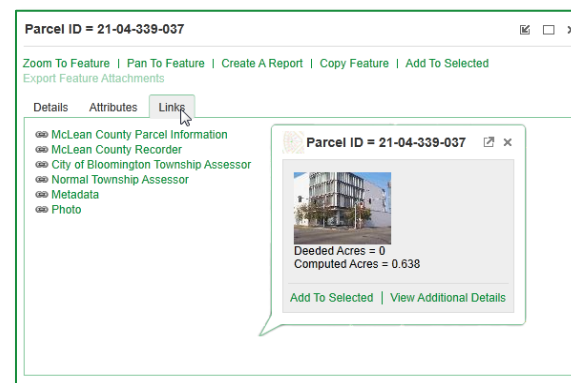
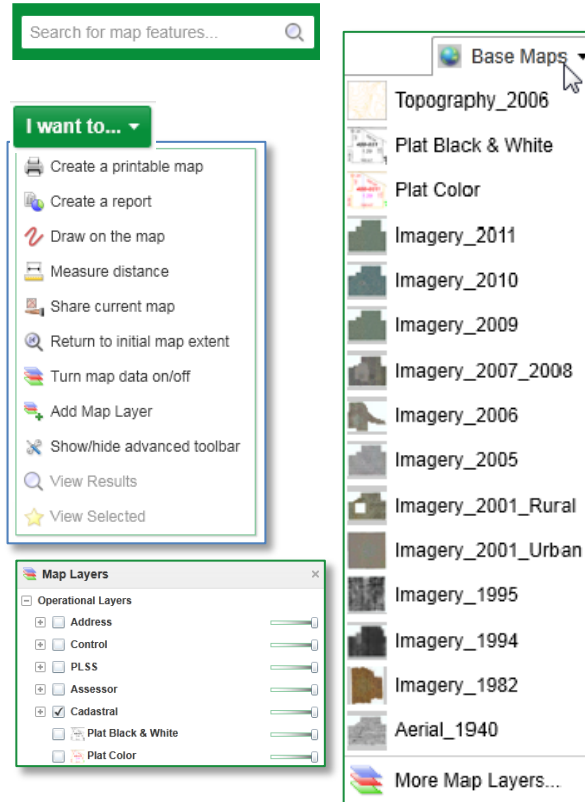
We recommend using a **three (3) button mouse**.

- Use Scrolling Wheel for...** Zooming In/Out - Use **Left Click for...** Identify features; selecting tools; expanding folders; turning on/off layers
- Use Right Click for...** Much, much more...



HOW DO I USE IT?

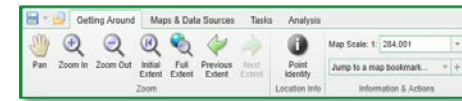
Search for map features...by typing below
Explore using other options shown below



SPECIAL TOOLS & TABS

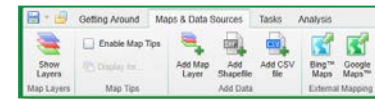


Getting Around



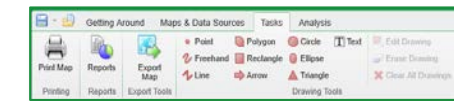
Pan, zoom in/out, initial/full extents, identify, maps scales and book marks

Maps and Data Sources



Show and add layers, enable map tips, configure layers, add data, open shp/csv files, go to 3rd party web maps

Tasks

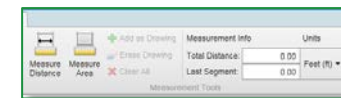


Printing & reports
 Add text & graphics markup to the map

Analysis



Identify locations
 Enable buffering, configure layers



Measure area and distance

